

# Newsletter

THE INSTITUTION OF ENGINEERS SRI LANKA

*Western Australia Chapter*

*April 2024*



IESL-WA started the current year 2023/24 with many webinars for member professional development. These webinars have been very successful due to good participation of many practicing engineers joining from Australia, New Zealand, Sri Lanka and many other countries. The Zoom platform has provided a greater opportunity to join seminars immaterial of their physical location.

In this edition of the Newsletter, we would like to introduce the newly elected Management Committee for the year 2023/24. The 09th AGM of the Institution of Engineers Sri Lanka, WA Chapter was held on Saturday 28th October 2023 at Centenary Park, Wilson.

The Management Committee 2023/24:

- President - Mahesh Kariyawasam (Civil)
- Vice President - Raveendra Salgado (Mining/Processing)
- Secretary - Dr. Tharanga Thotagamuwage (Civil)
- Editor - Saadiq Akbar (Civil)
- Treasurer - Thilak Jayantha (Mechanical)
- Ex officio - Dr. Senaka Welideniya (Geotech)

Committee members:

- Nandika Mirihana (Computer)
- Awanthi De Silva (Electrical)
- Hasitha Kahawala (Mining)
- Chirantha Weerawardena (Mining)
- Zulfikar Haleemdeen (IT)
- Mathanga Perera (Mechanical)
- Nadeesha Dilrukshi (Electrical)
- Tharindu Weerasinghe (Computer)



Figure 1 : The new executive committee elected for 2023-2024

## This issue:

Engineers Australia Medal  
2023

PAGE 02

Celebrating Community  
Spirit: IESL-WA Runner-Up  
for Citizen of the Year in  
Group Category

PAGE 03

What is and why, Mining?

PAGE 05

Navigating the Australian  
Engineering Landscape -  
Workshop

PAGE 10

Announcements, Events,  
and Updates

PAGE 13

# Engineers Australia Medal 2023



Figure 2 : Engineers Australia Medal 2023

Engineers Australia medal was presented to IESL-WA, acknowledging the significant work IESL-WA carries out to provide opportunities for those new to WA to effectively establish industry networks, better understand what is required to gain employment and provide continuing connections for ongoing learning, mentoring and networking.

IESL-WA is a leading Western Australian Sri Lankan community organisation focussed on engineers. The organisation is run by a dedicated group of volunteers elected annually by the membership. IESL-WA was formed in 2014 and continues to provide a platform for those who have come to Perth to study engineering, who have recently migrated with an engineering qualification or who are well established in the community. IESL-WA helps to connect and support its members times of need and also supports future engineers who are looking to call WA home. In 2023, IESL-WA also co-led career guidance workshops with 60 plus new graduates and migrants in attendance, with the purpose of providing them tools and networks to find employment in Perth. IESL-WA also organised professional development events for engineers at all levels with local and global presenters. All these events are open to all who are interested and usually multicultural with many non-Sri Lankan origin participants. The year end IESL-WA gala dinner was graced by more than 400 attendees representing diverse multicultural Australian professional community.

Representing IESL-WA to receive the Engineers Australia medal was past WA President Senaka Welideniya, current President Mahesh Kariyawasam and committee member Tharindu Weerasinghe.

# Celebrating Community Spirit: IESL-WA Runner-Up for Citizen of the Year in Group Category

We are delighted to announce that the Institution of Engineers Sri Lanka - Western Australian Chapter (IESL-WA) has been recognised as the Runner-Up for the Citizen of the Year Award in the Group Category for 2024. This esteemed accolade, presented by Auspire - Australia Day Council of Western Australia, celebrates organisations that have demonstrated exceptional commitment and contributions to their communities.

IESL-WA's dedication to community service and voluntary contributions has not only earned them recognition but also significantly impacted the lives of new immigrants settling in Western Australia. Through their unwavering support and compassionate initiatives, IESL-WA has played a pivotal role in helping newcomers integrate into their new environment, fostering a sense of belonging and camaraderie.

As an organisation, IESL-WA has exemplified the spirit of volunteerism and community engagement, going above and beyond to assist new immigrants in navigating the challenges of settling into a new country. From providing practical support with employment and education to offering cultural orientation and social integration programs, IESL-WA has been a beacon of hope and support for individuals and families embarking on a new chapter in their lives.

The impact of IESL-WA's efforts extends far beyond mere assistance; it is a testament to the power of compassion, empathy, and solidarity in building stronger and more inclusive communities. By extending a helping hand to those in need, IESL-WA has not only enriched the lives of new immigrants but has also strengthened the social fabric of Western Australia, fostering a more welcoming and inclusive society for all.

While being named the Runner-Up for Citizen of the Year in the Group Category is a tremendous honour, it is also a reflection of the collective efforts and unwavering commitment of every member of IESL-WA. Their selfless dedication, empathy, and willingness to lend a helping hand embody the true spirit of citizenship and community service.

As we celebrate this remarkable achievement, let us also recognise the importance of unity, compassion, and solidarity in creating a more inclusive and welcoming society. It is through organisations like IESL-WA that we can make a tangible difference in the lives of others and build a brighter future for all.

On behalf of the entire community, we extend our heartfelt congratulations to IESL-WA for being recognised as the Runner-Up for Citizen of the Year in the Group Category. Your dedication, compassion, and commitment to helping others have inspired us all, and we are immensely grateful for your contributions to making Western Australia a more welcoming and inclusive place for new immigrants.

Let us continue to uphold the values of empathy, kindness, and community service as we work together to build a better and more inclusive society for generations to come.

# Celebrating Community Spirit: IESL-WA Runner-Up for Citizen of the Year in Group Category



Figure 3 : Community Citizen of the year Award - Certificate of Appreciation

# What is and why, Mining?

By Eng. Janaka Dharmabandu  
EurIng; CEng; CEnv; FIMMM



*Figure 4 : Eng. Janaka Dharmabandu*

## Author Profile

Janaka is an award-winning Mining Executive with more than 30 years of experience in the global mining sector holding executive-level responsibilities in Europe and Australia, and project involvements in Europe, Australia, Africa and Asia. He was the Global Director for Mining at prestigious speciality chemicals company Elementis plc, before joining MEC Advisory in Australia as principal advisor. His key speciality is in developing new mining projects starting with greenfield exploration, leading through to commencement of production.

He was a project executive for the Masbate Gold Project in Philippine guiding the planting of more than one million trees as part of the multi-award-winning social responsibility and worker safety programs. More than 90% of the large employee base of Masbate Minesite were from the nearby communities, most of whom were given skills training by the training department of the mine.

Originally a graduate of the Mining Department of the University of Moratuwa, he went on to earn his post-graduate qualifications from Murdoch University in environmental management and law. He won the Prestigious Merit Award for Business Leadership from the Australian Trade Commission of the Australian Federal Government in 2015 for his contribution to implementing sustainable mineral resource development practices in various projects in Africa and Asia.

Now Janaka is based in Perth and shares his time between Perth and Helsinki attending to business responsibilities in Australia and Europe.

# What is and why, Mining?

By Eng. Janaka Dharmabandu  
Eurlng; CEng; CEnv; FIMMM

## 1. INTRODUCTION

Mining is the first interface of civilisation with nature. Each year about 5 billion tonnes of minerals are mined from the earth. Barring industrial catastrophes, it has also been the most "intense" interface between civilisation and nature in that, both sides of the interface are impacted intensely by the transaction that takes place over the impact footprint. Take a 100ha mine site; the immediate impact of its operation on its footprint is much more intense than had the 100ha been used, for example, to run a farm or a factory. In the same way, the same mine generally would generate a far higher positive economic impact. Also, it is much easier to find substitute locations for the farm or the factory - but the mine must happen where the mineralization occurs.

## 2. MINING IMPACT ON SOCIETY, ECONOMY, AND ENVIRONMENT

A potent contrast here, however, is in how the socioeconomic to environmental impact trade-offs play themselves out in the long run, including the post-closure phase. The impact on the environment of mining is reversible - if mining is conducted professionally throughout its entire project life cycle. This reversal and recovery process is rapid in regions where the dynamics of biotic and abiotic factors are intense – for example, tropics and sub-tropics. Note this would not be so should the virgin land cover be transformed into a rice field or a residential area, where the change will be more permanent - but that is a separate discussion. On the other hand, education, empowerment, and service infrastructure that a well-operated mine brings to rural communities are irreversible social investments (Fig. 1). An illegal logger who will get an easy pathway to become a mechanic in the mine and whose children who then receive a good education -due to their father being stably employed and the community school being better-resourced - adds to a positive social chain reaction that is very difficult to accurately model. A mining impact study by IFC done in 2013 (Ref. 1) found that "about 28 jobs in the economy were associated with one direct job in the mine". Twenty-eight (see Table 1) is an encouragingly high number. But there is much literature in the public domain supporting job multiplier factors around 10 for mining projects in remote areas.



Figure 5 : Social conditions of rural Myanmar where mining could have had a marked positive impact.

# What is and why, Mining?

Job Gain			Job Loss
Direct Jobs (working for the mining company)	Indirect Jobs (suppliers and sub-contractors)	Induced Jobs (emerges to support new economy)	(due to loss of access / better law enforcement / alternative employment)
Professionals & managers, equipment operators, laboratory jobs, administration jobs, infrastructure builders, mechanics, electricians, fitters, security personnel.	Catering services, transport services for the mine staff, making small supplies such as survey pegs, sample bags, uniforms, furniture etc.	Local farmers supplying catering companies, barber salons, shops, restaurants, laundry services, transport services, mechanic shops, medical clinics, phone service companies, schools, government service bureaus, fuel stations etc.	Mostly illegal and small scale miners displaced by the mine,  Illegal loggers,  Some farming jobs.

Jobs gained and Jobs lost when a new mine appears. It had been commonly accepted that the ratio ((Indirect + Induced Jobs)/ Direct Jobs) is about 10, but a controlled study done by IFC in Ghana in 2013 claims this ratio for that project is 28.

Table 1 Mining impact study, IFC 2013

### 3. RESPONSIBLE MINING CODES AND ETHICS

Like in any other profession- for professionals in mining, the application of their knowledge is governed by codes and ethics. An essential part of their training is to be "responsible" in addition to being knowledgeable. For example, a modern mine supervised by qualified mining professionals would have, among many other dangerous equipment and activities, a myriad of moving vehicles with gross weights often exceeding 400 tonnes and rock blasts in some mines regularly setting off explosives to achieve rock blasting. Yet statistics from Australia, a country with a mining industry that generates about USD350 billion in annual sales revenue, shows that an average worker is 20% more likely to get accidentally injured working in retail trading than working on a mine. If that is the degree to which the mining industry goes to look after the welfare of its work force, would the doubt that mining professionals will not show the same degree of diligence towards environmental and social responsibilities be defensible? Of course not. In countries where rules are respected and professional accountability counts, "Responsible mining" sounds almost as superfluous as "Responsible dentistry."

### 4. RESOURCE CURSE VS. BLESSING

"Resource Curse" is a phrase that forces its way into any high-level policy discussion on resource development, and it is doing so currently in Sri Lanka too now. It is a hypothesis that came into macro-economic parlance in the early '90s where it proposes that resource-rich economies generally grow more slowly than resource-poor economies. At first glance, it sounds startling since a gift of nature should be a blessing, not a curse. Although concern over the efficacy of resource-dependent development is centuries old, the exact phrase "Resource Curse" was first used by Alan Gelb in 1988 as part of economic research. He argued that resource-poor countries engage earlier in labour-intensive competitive manufacturing with the result being faster diversification, higher saving rates, and faster build-up of human and social capital. Since then, there have been few essays challenging the concept of Resource Curse. More recently, Daniel Lederman and William Maloney of The World Bank concluded that the evidence for Resource Curse "remains elusive". They say that nations with quality administrative institutions can manage their resource revenue and effectively turn it into positive economic growth. In addition to efficient revenue management, they note that quality institutions and monitoring mechanisms lead to transparency and accountability as well, reducing space and incentives for corruption.

# What is and why, Mining?

Mineral occurrences are subjected to rules of utility like other attributes of nature such as population, water, terrain, flora and fauna, sunlight, wind, etc. Any of them can have a positive utility (a resource that can be converted to a reserve), or a negative utility (a burden that needs a solution) depending on the socio-economic necessities of the geographical location of their occurrence. Driven by technology or supply/demand movements, a mineral occurrence may or may not present itself as a mineral resource. For example, a coal deposit that was worth millions in the 1980's in Europe, was nothing in the 2010's. The authors of the Resource Curse Hypothesis failed to recognise this transient nature of mineral resources. Wright and Czelusta effectively utilised this intrinsic flaw in the Resource Curse hypothesis to undermine it (Ref. 2).

## 5. FUTURE MINING

Let's take a glance into the future. Mining of mineral-rich polymetallic nodules' from deep seas of PNG and elsewhere are scheduled to start production in 2019. Further up, the Goldman Sachs project team argues that "mining in space is getting cheaper and easier, and the rewards are becoming more promising as time goes by". The capacity of these technologies to have a real impact on the attractiveness of land-based mineral resources is still a few decades away. But these time lengths need to be viewed against the time it takes to find and develop a land-based mineral resource – which is long.

These transformational changes in the supply chain of raw materials can significantly change the ability of individual nations to convert land-based mineral deposits to mineral resources and then to mineable reserves. Also, as happened in Europe, mineral resources always had a critical role to play in the development story of their host nations. But those same deposits in Europe are not considered "mineral resources" today, due to changes in the societal values and aspirations towards the environment, safety, security, and employment, despite demonstrable economic values these deposits carry.

## 6. CONCLUSION

The optimum utility of a mineral occurrence to a nation is in the early stages of the nation's growth story. Handful, the nations in Asia, Africa, and the Middle-east all are developing countries -still in the early stages of the growth curve towards becoming "Developed Nations". There have been few traditional methods in which they could get development aid, a large majority of which would be of loans: WB, IMF, EBRD, ADB would be to mention a few sources. More recently China has appeared looming very large on the horizon. There are few examples of countries in the region suffering repercussions of relying far too much on development debt versus the less popular, but right option -undertaking industry, trade, and fiscal reforms. There are few examples from the region such as Sri Lanka and Pakistan- where national economies are stressed to dangerous levels due to debt burden. The lenders and donors would want to concentrate on infrastructure and manufacture, and rarely offer assistance for education & social welfare - the very aspects to which the poor countries must give special attention. Especially under these circumstances, not to proactively develop their mineral deposits, borders on the part of ignorance and dereliction of their responsibilities on the part of national policy-makers in those countries with stressed economies.

# What is and why, Mining?

In 2022 mining industry of Sri Lanka including gemstones brought in about USD 0.05 billion foreign income compared to USD 5 billion of the Philippines. There are a number of factors critical for harnessing the mineral potential of a country. While that discussion is outside the scope of this essay, it must be mentioned that the following are among the most important ones;

- Fiscal parameters that take fair cognisance of investor risks, efforts, and the cost of capital associated with project realisation,
- Clear and efficient permitting processes and fast mechanisms to resolve disputes,
- Clear and fair set of rules for mineral resource developers to acquisition/rent the both crown and alienated land, on demonstration of clear social and economic benefits and environmental impact management plan.

Mining in Sri Lanka should be encouraged and supported. It can play an inimitable role in pulling the country out of the economic turmoils and social unrests.

## 7. References:

1. <https://documents1.worldbank.org/curated/en/157191468326714061/pdf/835080WP0IFC0J00Box382079B00PUBLIC0.pdf> )
2. <https://www.youtube.com/watch?v=73mXXJpEjRI>

# Navigating the Australian Engineering Landscape - Workshop

On 23rd of March 2024, IESL-WA successfully organised and executed a valuable workshop for the students and qualified engineers who recently arrived in WA. This workshop focused on educating our fellow members,

- Settling in Western Australia
- Mentorship & Professional Development
- Migration Pathways for Qualified Engineers and Engineering Students

This event also opened a platform for our young engineers and engineering students to network with our professionals and share their concerns and experiences.

The valuable feedback we received from our attendees,

“It was a pleasure to participate in IESL-WA workshop, Navigating the Australian Engineering Landscape, networking session.

We admire all the hard work you and your team are carrying out.”

Renuka Bandaranayeka

“Great job organising. I really loved the session with the migration agent - extremely insightful.”

Uchitha Ranasinghe

“I'm really thankful for the chance to support newcomers in our field and help them reach their career goals. look forward to the possibility of future collaborations and interactions as well. Please don't hesitate to reach out if there are any further opportunities where I can be of assistance.”

Kapila Karunaratna



Figure 6 : NAEL Workshop - IESL-WA Committee Members

# Navigating the Australian engineering Landscape - Workshop



IESL-WA PRESIDENTS 2014-2023 AND NAEL WORKSHOP SNAPSHOTS

# Navigating the Australian engineering Landscape - Workshop



NAEL WORKSHOP PRESENTERS

## Engineers As Leaders

Presenter:

**Prof. Ajantha Dharmasiri**

Adjunct Professor-University of Oklahoma, USA; Former Chairman and Director of PIM, University of Sri Jayawardenepura; Past President of CIPM, Sri Lanka.



**DATE:** Thursday 04 April 2024

**TIME:** 5.00pm AWST; 8.00pm AEDT; 2.30pm SL Time

**MODE:** Webinar

**Zoom Meeting Link:**  
TBA

Why engineers have to think and act as leaders in an increasingly challenging environment?

Leadership has become the buzzword in the business world, especially in a time where the skyrocketing competition demands empowered leaders at all levels.

With the essentials of management properly adhered to leadership can provide the cutting-edge for survival and success. Engineers with their brilliant brains need to be aware of the need to move beyond technical expertise. They need to master the required knowledge, skills, and attitudes to enhance the leadership competencies in order to face current and future challenges with confidence.



## About the presenter



Prof. Ajantha Dharmasiri has a rare combination of being a Chartered Manager, Chartered HR Professional and a Chartered Electrical Engineer. He is acclaimed as a conference speaker, corporate trainer, strategy consultant, author and an academic. He is a former Director and Chairman of the board of Management of Postgraduate Institute of Management (PIM), University of Sri Jayawardenepura, Sri Lanka.

Prof. Dharmasiri is an Adjunct Professor at Price College of Business, University of Oklahoma, USA. He was the editor of pioneering Sri Lankan Journal of Management (SJIM). Being a Commonwealth AMDISA Doctoral Fellow, a Fullbright Postdoctoral Fellow, and a Commonwealth Postdoctoral Fellow, he is also an independent director of several boards.

Mining Engineering Subcommittee

The Institution of Engineers Sri Lanka-Western Australia Chapter

## Rare Earth Permanent Magnets and Green Dreams: Sri Lanka's Rare Earth Odyssey for Harnessing the Hidden Treasure

Presenter:

**Eng. Nimila Dushyantha**

BScEng (Moratuwa), MPhil (Moratuwa)

Lecturer at the Department of Applied Earth Sciences, Uva Wellassa University



**DATE:** Thursday 22 February 2024

**TIME:** 5.00pm AWST; 8.00pm AEDT; 2.30pm SL Time

**MODE:** Webinar

**Zoom Meeting Link:**

[https://us02web.zoom.us/j/84415153482?](https://us02web.zoom.us/j/84415153482?pwd=VXI3MTIrNk1sK2lDSWRhS1VadUp4dz09)  
[pwd=VXI3MTIrNk1sK2lDSWRhS1VadUp4dz09](https://us02web.zoom.us/j/84415153482?pwd=VXI3MTIrNk1sK2lDSWRhS1VadUp4dz09)  
Meeting ID: 844 1515 3482 Passcode: 329361



### Presentation Highlights:

- How does global demand emphasise the need for sustainable solutions?
- Which deposit emerges as Sri Lanka's primary rare earth source?
- How are challenges in REE availability being strategically navigated?
- Which locations stand out as key rare earth sources in Sri Lanka?
- Can technological and environmental hurdles be overcome for exploitation?
- What makes the Eppawala phosphate deposit crucial for REEs?
- Do upgraded extraction techniques unlock Sri Lanka's global REE potential?

### About the speaker

**Nimila Dushyantha** is a Mining Engineer who graduated from the Faculty of Engineering, University of Moratuwa, earning a BSc Engineering Honors degree with a specialization in Mining and Mineral Processing in 2015. Following graduation, he successfully completed a Master of Philosophy (M Phil) at the Department of Earth Resources Engineering in 2019. Initiating his Doctor of Philosophy (PhD) in 2019 in the same department, he specialised in minerals processing, focusing on the development of extraction techniques for Rare Earth Elements (REEs) from diverse geological sources. One of his PhD publications was selected as the leading article of the week by the Global Rare Earth Industry Association (REIA) in Belgium and included it in their weekly newsletter. In 2020, Nimila's expertise led to an invitation for a lecture on REEs and uranium processing at the University of Science & Technology Beijing, China. In 2021, he was invited to deliver a keynote speech on REE magnets and their future challenges at the 9th International Conference on Metallurgy Technology and Materials in Zhengzhou, China.

Recognizing his outstanding contributions, he was awarded the P.G. Cooray Medal as the Young Geoscientist of the year 2021 by the Geological Society of Sri Lanka (GSSL). In 2023, he participated as a speaker in a webinar on REE supply chain diversification organized by the journal Minerals and Mineral Materials. Eng. Nimila Dushyantha actively engages in collaborative research with Monash University Malaysia, REIA in Belgium, Ceylon Waste Management Pvt Ltd, and Lanka Phosphate Ltd – Eppawala. Currently, he serves as a Lecturer at the Department of Applied Earth Sciences, Faculty of Applied Sciences, Uva Wellassa University.

Mining Engineering Subcommittee

Institution of Engineers Sri Lanka-Western Australia Chapter

## A Blueprint for Developing a Sustainable Sri Lankan Mining Industry by Attracting Foreign Investment

Presenter:

**Chirantha Weerawardena,**

BScEng, MSc (Mineral Economics), FAusIMM CP, MIMMM CEng, FIEAust CPEng EngExec NER, APEC Eng, IntPE(Aus)

**Director/Managing Consultant, CW Mining Consultants Pty Ltd**



**DATE: Thursday 18 January 2024**

**TIME: 5.00pm AWST; 8.00pm AEDT; 2.30pm SL Time**

**MODE: Webinar**

**Zoom Meeting Link:**

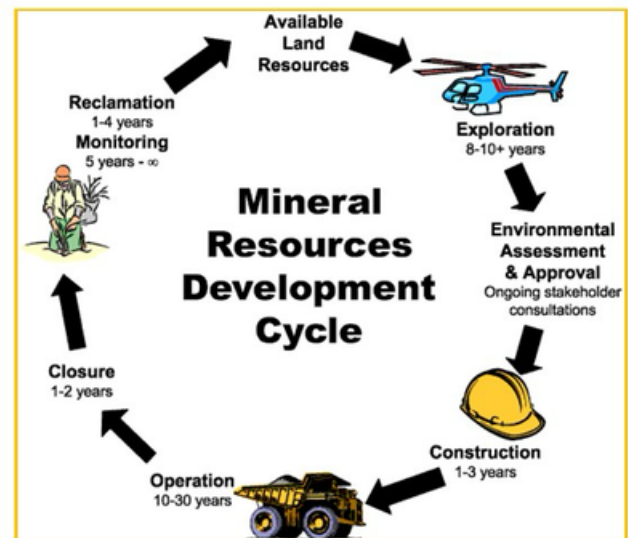
<https://us02web.zoom.us/j/82219143853?pwd=LzdpMnpydi9wNEg0Y2tjMjVjVYk0ZkZkdz09>

Meeting ID: 822 1914 3853

Passcode: 309994

### Presentation Highlights:

- What is sovereign risk?
- Where Sri Lanka is on the sovereign risk scale ?
- Why couldn't we attract substantial foreign investment in mineral sector during last 50 years?
- What are essential requirements to attract mining investors to Sri Lanka
- A new regulatory framework and royalty regime
- Measures to prevent red tape, corruption and political interference in mine approvals and operations
- How to harness foreign investment in mineral industry for national development and benefit of Sri Lankan people
- Priority minerals for rapid mineral development – mineral sand, phosphate, clay minerals, value added quarry products and gems



### About the speaker



**Chirantha Weerawardena** is a Chartered Professional Engineer accredited by three professional engineering institutions in Australia & UK and a Fellow of both Engineers Australia and Australasian Institute of Mining and Metallurgy. He graduated from University of Moratuwa in 1992 and subsequently obtained three post graduate qualifications including MSc (Mineral Economics) at Curtin University. Chirantha worked 10 years in Sri Lanka before migrating to Australia in 2002. He has got 31 years of experience in mine planning, operations and management.

After holding senior positions in mine planning and operations in very large open pit mining operations, he is currently working as Director and Managing Consultant of a boutique mining engineering and management consultancy serving a number of major mining companies in Australia. He is currently leading and participating in scoping, feasibility, project evaluation and development of several mining projects.

Chirantha's extensive mineral industry experience extends to number of commodities including Graphite, Rock Aggregates, Tantalum, Tin, Lithium and Iron Ore.

Mining Engineering Subcommittee

Institution of Engineers Sri Lanka-Western Australia Chapter

## GEO-SPATIAL TECHNOLOGIES AND APPLICATIONS FOR SOCIAL BENEFIT

**Presenter:**

**DR NIMALIKA FERNANDO**

BSc Colombo, MSc Keele, MPhil Moratuwa, PhD Curtin  
Lecturer, School of Electrical Engineering, Computing and Mathematical  
Sciences, Curtin University



**DATE:** Thursday 14th December 2023

**TIME:** 5.00pm AWST

(8.00pm AEST, 2.30pm Sri Lanka Time)

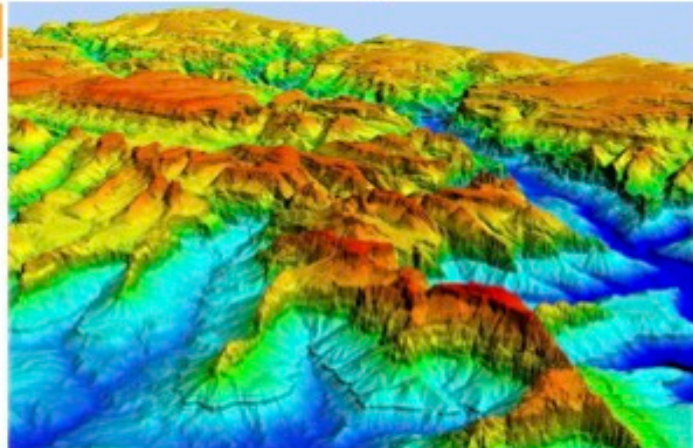
**Webinar**

<https://us02web.zoom.us/j/81976957435?>



### Presentation Highlights:

- Overview of Geo-spatial systems
- Examples on applications of Geo-spatial systems in different domains such as indoor navigation and disaster management
- Collaborative and open data collection approaches
- Role of Geo-spatial systems for Sri Lanka in the present context for economic growth and the social stability



### About the speaker



Dr.Nimalika Fernando involved in geo-informatics domain, focusing on human centered navigation, interoperability and web/ mobile GIS, for more than 15 years, advocating free and open-source software for GIS, working closely with like-minded communities around the world. Nimalika is a physical science graduate from University of Colombo, and then obtained her MSc in IT from Keele University, UK, and MPhil from Department of Electrical and Electronic Engineering, University of Moratuwa, Sri Lanka. She based her long academic career at Sri Lanka Institute of Information Technology, Malabe Sri Lanka for more than a decade where she served as a senior lecturer before starting her PhD studies at Curtin, University, Australia. At present she is serving as an academic in School of Electrical Engineering, Computing and Mathematical Sciences, Curtin University. She is a Charter member of OSGeo and a member of IEEE.

**The Institution of Engineers Sri Lanka-Western Australia Chapter**

## NAVIGATING THE AUSTRALIAN ENGINEERING LANDSCAPE

A workshop on Orientation to the Professional Environment, Migration Pathways, Work Rights and Permanent Residency for qualified Engineers and Engineering Students from Sri Lanka.

### PRESENTATIONS & LECTURES

A wide variety of topics will be covered by respective experts on this event, which includes,

- Settling in Western Australia: By Eng. Vajira De Silva
- Mentorship & Professional Development: By Eng. Chirantha Weerawardena & Dr. Senaka Wallideniya
- Presentation from Engineers Australia: By Eng. Shalini Saldana
- Migration Pathways for Qualified Engineers and Engineering Students: By A Registered Migration Agent



### NETWORKING WITH ACADEMIC AND INDUSTRY PROFESSIONALS IN WA

We have an open and welcoming group of professional engineers. Take this opportunity to talk to the experts and expand your knowledge, connections and relationships.



Saturday,  
23rd of March 2024



9:00am - 12:30pm



Wilson Community Hall,  
40 Braibrise Rd, Wilson,  
WA, 6107

Register for free using the link below:

<https://form.jotform.com/240354550963861>



Event Conducted By:  
The Institute of Engineers, Sri  
Lanka - WA Chapter

# Announcements, Events, and Updates

## Upcoming Events

Sri Lankan Engineers Night - 2024 | 10th Anniversary Dinner Dance

Date : 3rd of August 2024

Location : Serbian Community Centre

228 Kenwick Road, Maddington, WA 6109

Follow us on our social media platforms for future updates,

Website : <https://www.ieslwa.org/iesl-wa-home>

Facebook : <https://www.facebook.com/ieslwa>

LinkedIn : <https://www.linkedin.com/company/institution-of-engineers-sri-lanka-iesl-wa-section/>

**THE END**